

Area Maps

Site
Summary

Aerial Views

Site Plan

Demographics



Offered by:
CAROLINA HOLDINGS, INC.

300 N. Main St., #402
Greenville, SC 29601

864.272.0088
800.763.8088

www.chholdings.com
bob.ingram@chholdings.com



Kingstree Commons
Kingstree, SC

Other CHI Projects



Kingtree Commons
Kingtree, SC



Barnes & Noble
Greenville, SC



CVS
Greenville, SC



Oakwood Square
Greensboro, NC



Location

Longstreet Street (Highway 52) and Gee Street

Shopping Center

The center totals 49,674 square feet, is anchored by BI-LO, and also includes Cato Fashions, Young's Fashions, First American Cash Advance, and Peking Restaurant.

Availability

One outparcel of 1.10 acres located on the corner of the signalized intersection.

Demographics

2004 Estimates	5 Mile	10 Mile	15 Mile
Population	11,256	17,797	36,696
Avg HH Income	\$37,886	\$37,892	\$38,875



Kingstree Commons is the most desirable center for retailers seeking a high profile location in historic Williamsburg County in the southern tip of South Carolina's Pee Dee District.

As the county seat, Kingstree serves as the business and shopping center for 36,000+ county residents, as well as area agriculture professionals who travel to the city to access its large cotton gin and tobacco market, and hunting and fishing enthusiasts who are drawn to the area's reputation as a "sportsman's Paradise". Located equidistant from Charleston, Columbia, and Myrtle Beach, Kingstree is know for its safe, rural atmosphere, notable architecture, and enviable quality of life.

Kingstree Commons occupies a prime position with high visibility at the corner of Longstreet (Hwy 52) and Gee Streets. This central location makes it easily accessible to the entire trade area.

Anchored by a BI-LO supermarket, featuring a full-service deli, bakery, fresh seafood shop, floral department, and café, Kingstree Commons attracts value-and convenience-minded shoppers from throughout the region. The 35,914 –square-foot store was merchandised to provide a full offering in an attractive and modern architecture. BI-LO is the area's leading grocer.

Kingstree Commons also features an additional 13,760 square feet of specialty retail space, which includes Cato Fashions. The 1.10 acre outparcel is ideal for a fast food restaurant, bank, or other retail.

Offering quality, value, and convenience, Kingstree Commons is Williamsburg County's most popular shopping center.

Other CHI Projects



Circuit City
Winston-Salem, NC



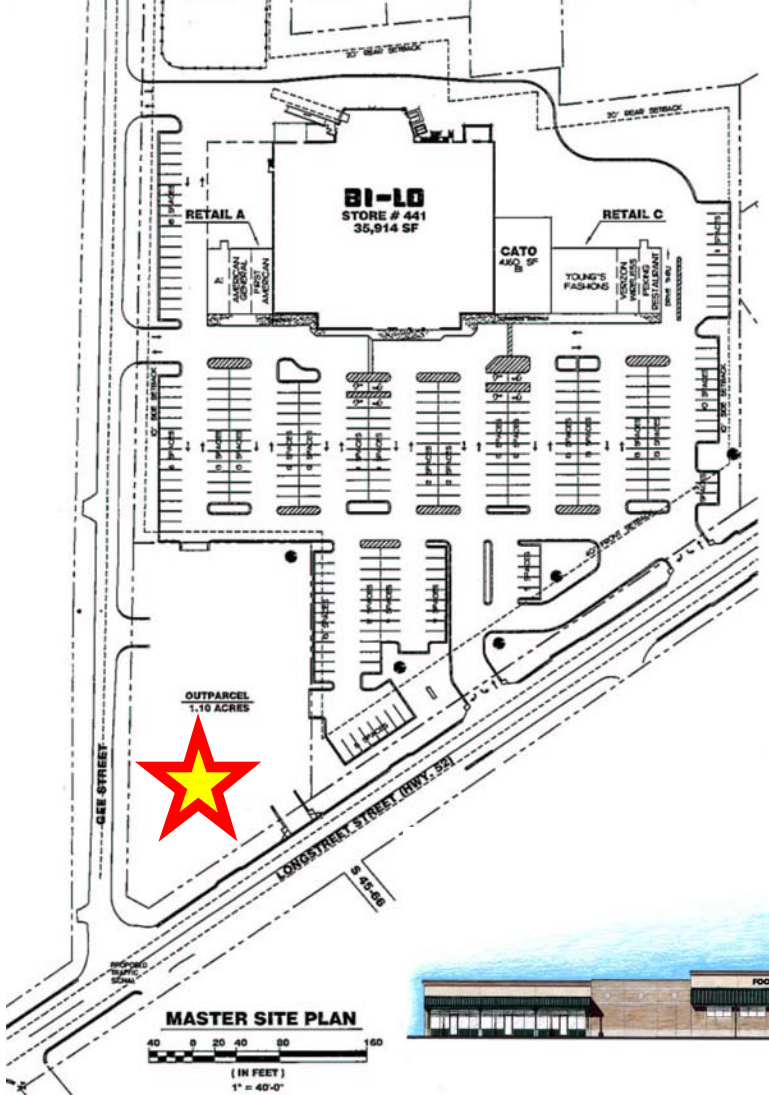
Jackson Plaza
Cookeville, TN



Kinko's
Greenville, SC



Wendover Square
High Point, NC



SQUARE FOOTAGE

BI-LO	35,914 SF
RETAIL A	3,600 SF
CATO	4,160 SF
RETAIL C	6,000 SF
TOTAL	49,674 SF

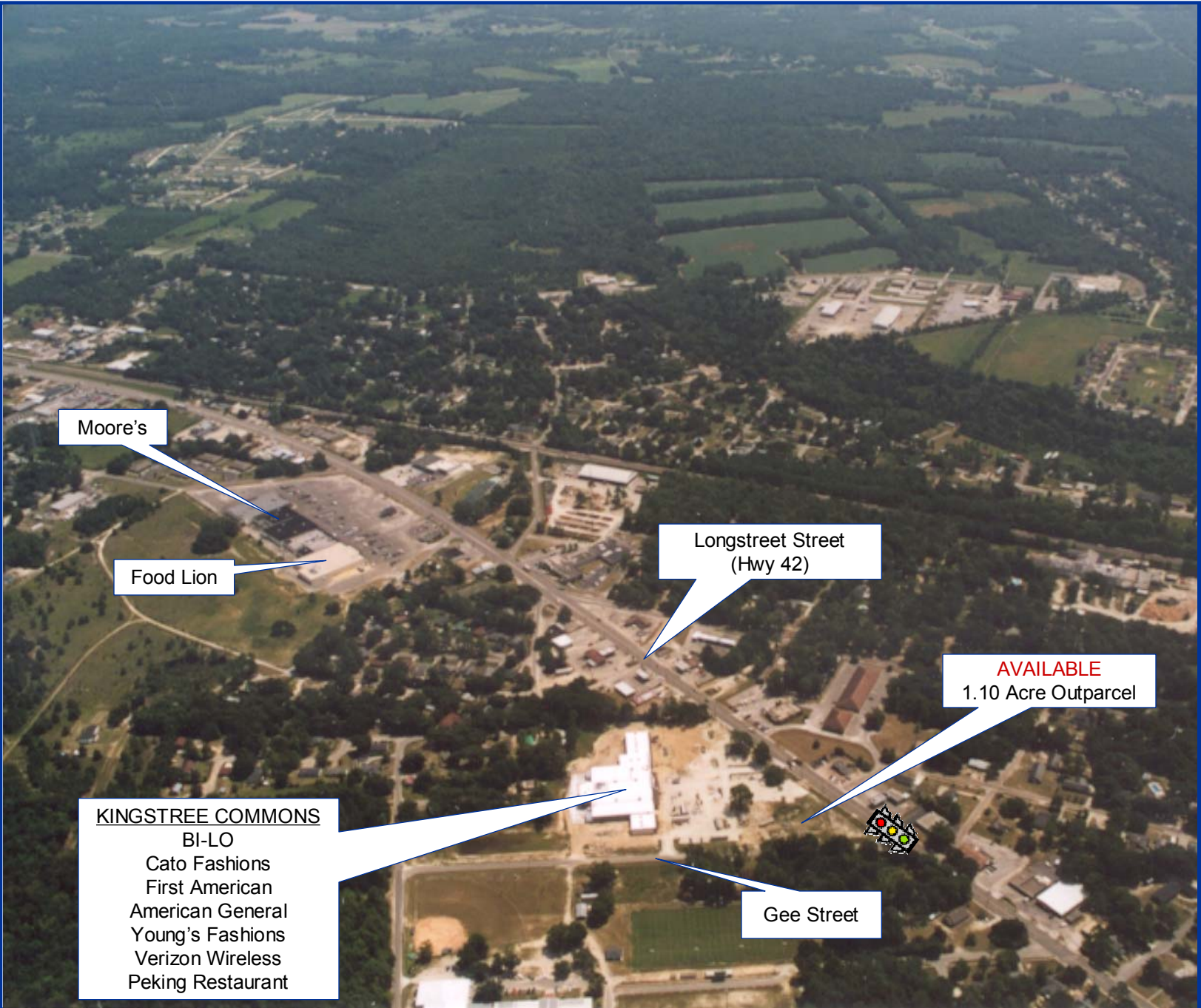
PARKING INFO

PARKING REQUIRED	261 SPACES
PARKING PROVIDED	286 SPACES



LOCATION MAP





Moore's

Food Lion

Longstreet Street
(Hwy 42)

KINGSTREE COMMONS
BI-LO
Cato Fashions
First American
American General
Young's Fashions
Verizon Wireless
Peking Restaurant

Gee Street

AVAILABLE
1.10 Acre Outparcel





KINGSTREE COMMONS
BI-LO
Cato Fashions
First American
American General
Young's Fashions
Verizon Wireless
Peking Restaurant

Longstreet Street
(Hwy 42)

AVAILABLE
1.10 Acre Outparcel

Gee Street



Aerial View



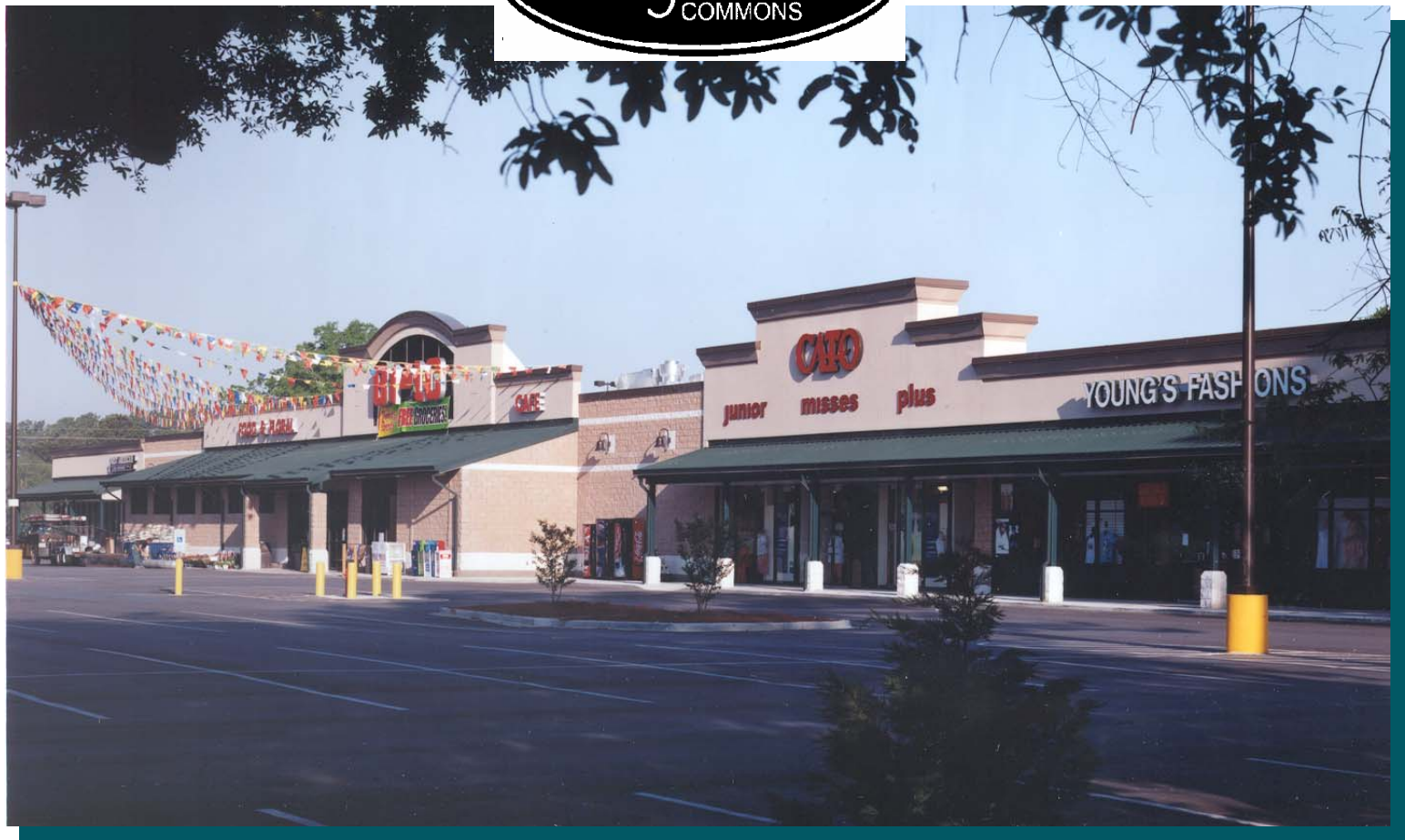
KINGSTREE COMMONS
BI-LO
Cato Fashions
First American
American General
Young's Fashions
Verizon Wireless
Peking Restaurant

Gee Street

**AVAILABLE
1.10 ACRE
OUTPARCEL**

Longstreet Street
(Hwy 42)



The logo for Kingstree Commons, featuring the word 'Kingstree' in a white, cursive font and 'COMMONS' in a smaller, white, sans-serif font, both inside a black oval with a white border.

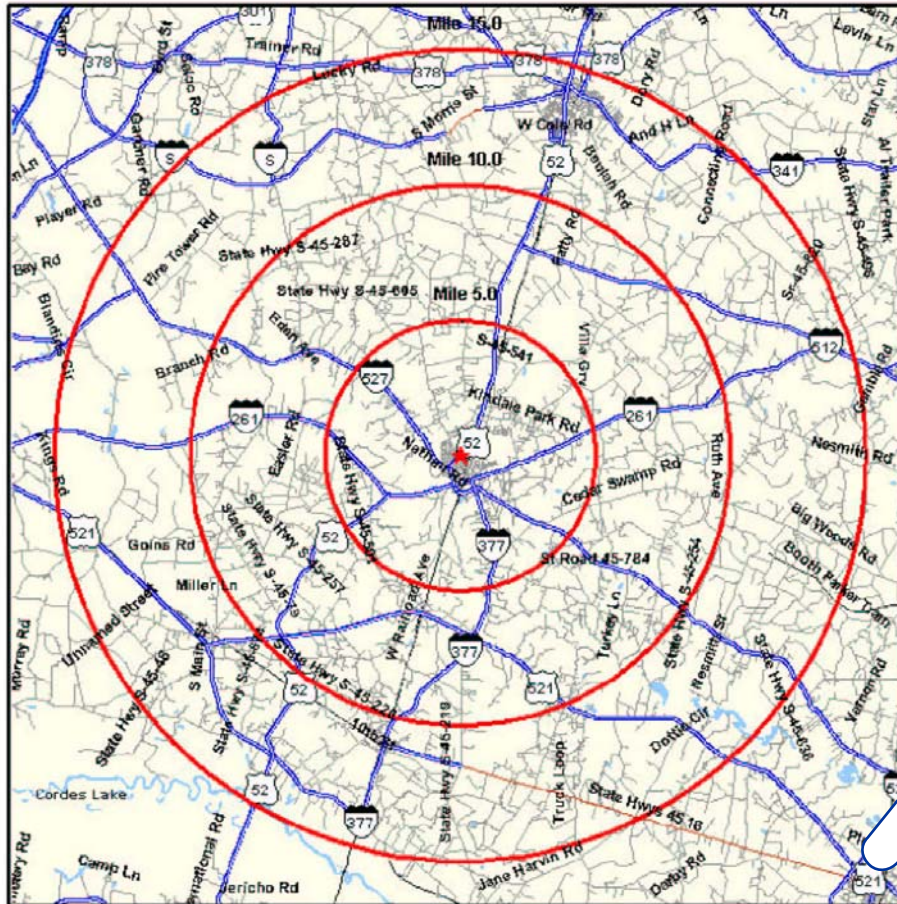
Kingstree Commons



Area Map

Prepared For: CHI
Project Code:

Order #: 962944119
Site: 03



N LONGSTREET ST AT GEE ST
KINGSTREE, SC 29556

5.00, 10.00 and 15.00 Mile Radii

Coord: 33.678600 -79.829400



SEE ADDITIONAL
DEMOGRAPHIC
INFO ATTACHED
IN EMAIL



Prepared on: May 14, 2004
© 2004 CLARITAS INC. All rights reserved.
1 800 866 6511



REPORTS

Demographics

